



ELAD Application Notes AN-004

Using FDM-DUO with N1MM (Ver. 1.05327)

Contents

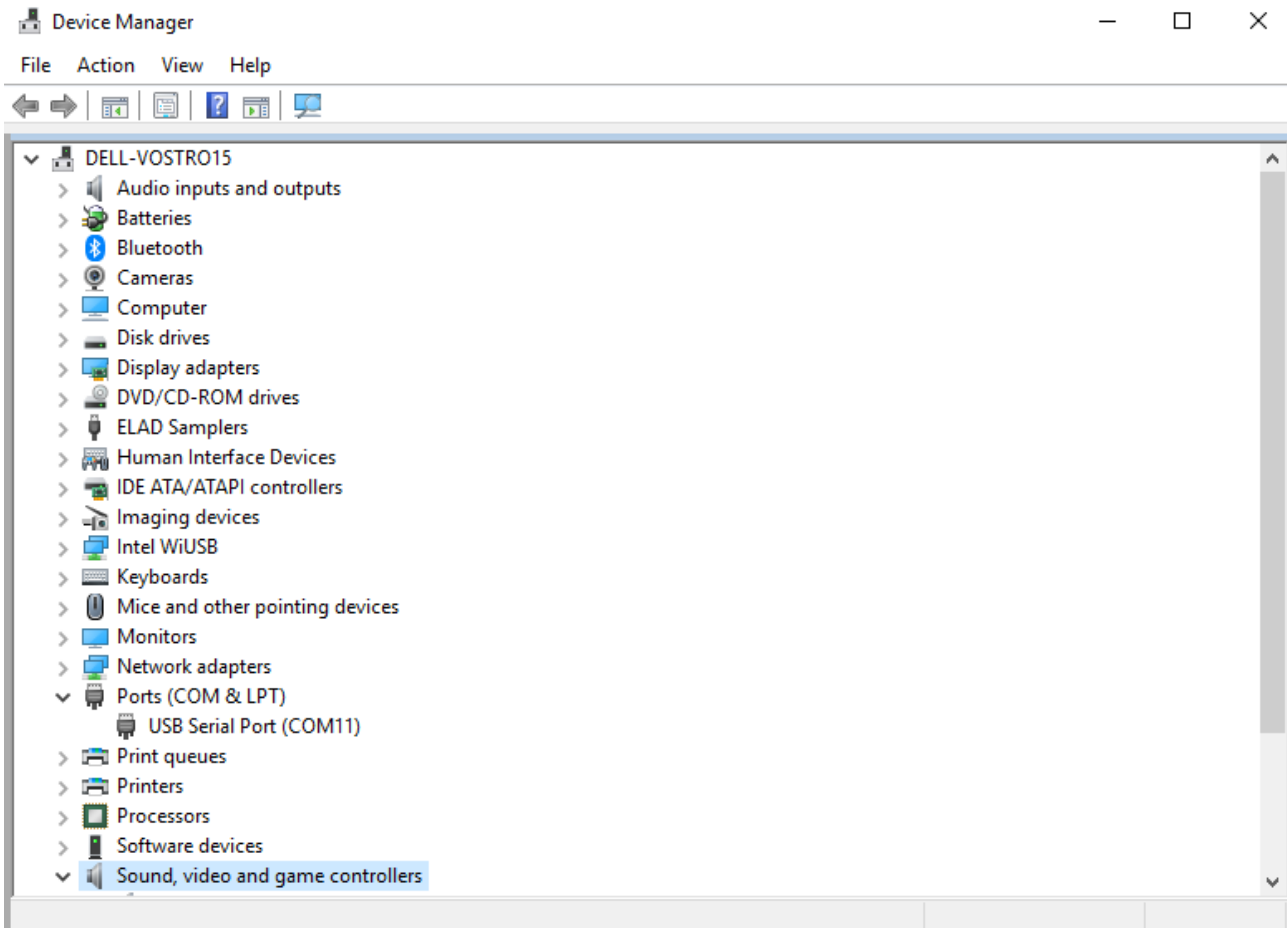
Introduction.....	2
Pre-requirements	2
1 N1MM first look	5
2 N1MM settings.....	5

Introduction

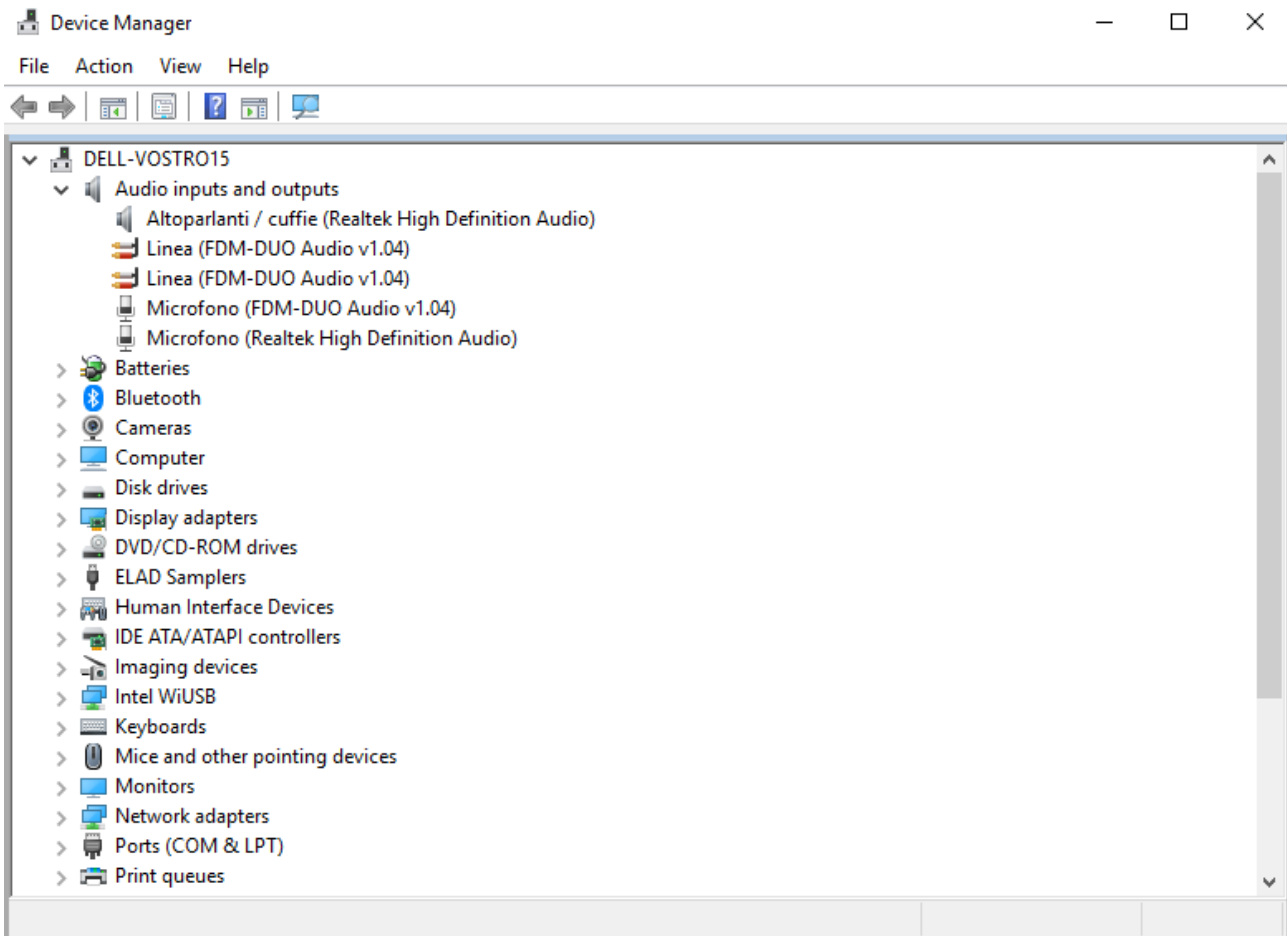
This application note describes how to use N1MM and FDM-DUO.

Pre-requirements

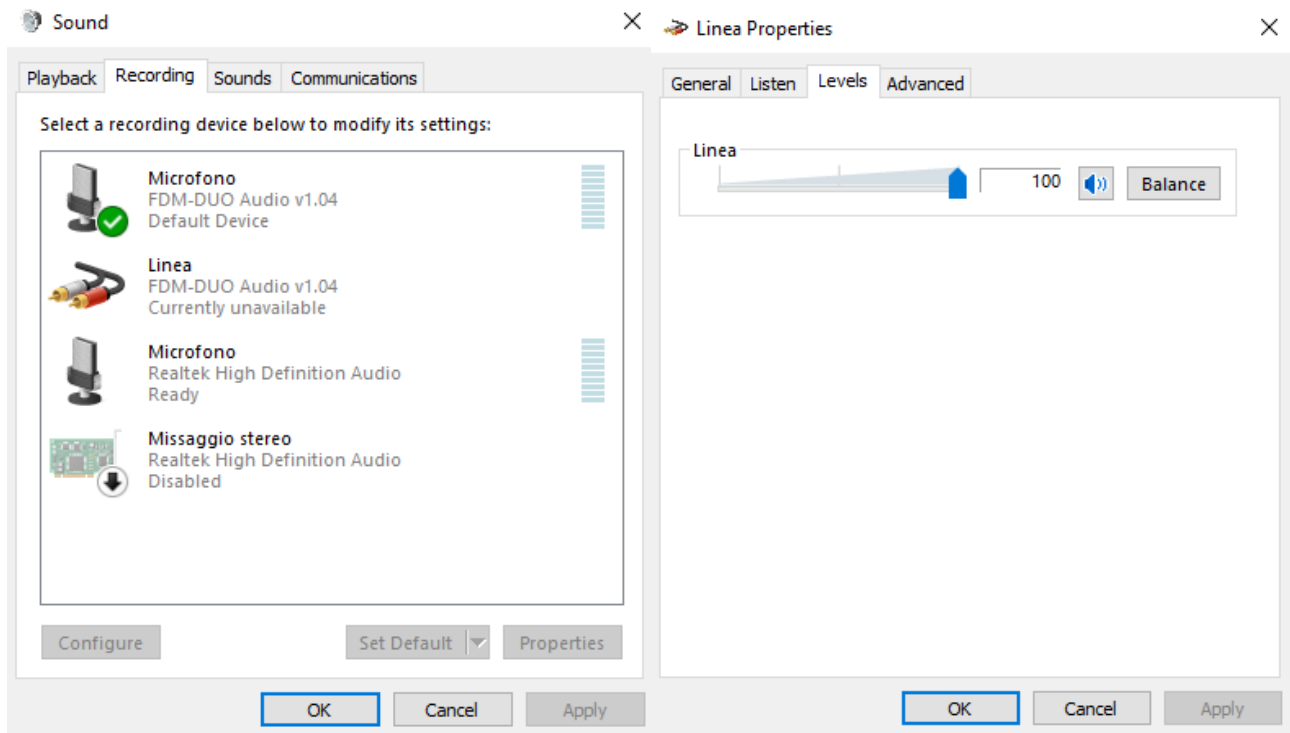
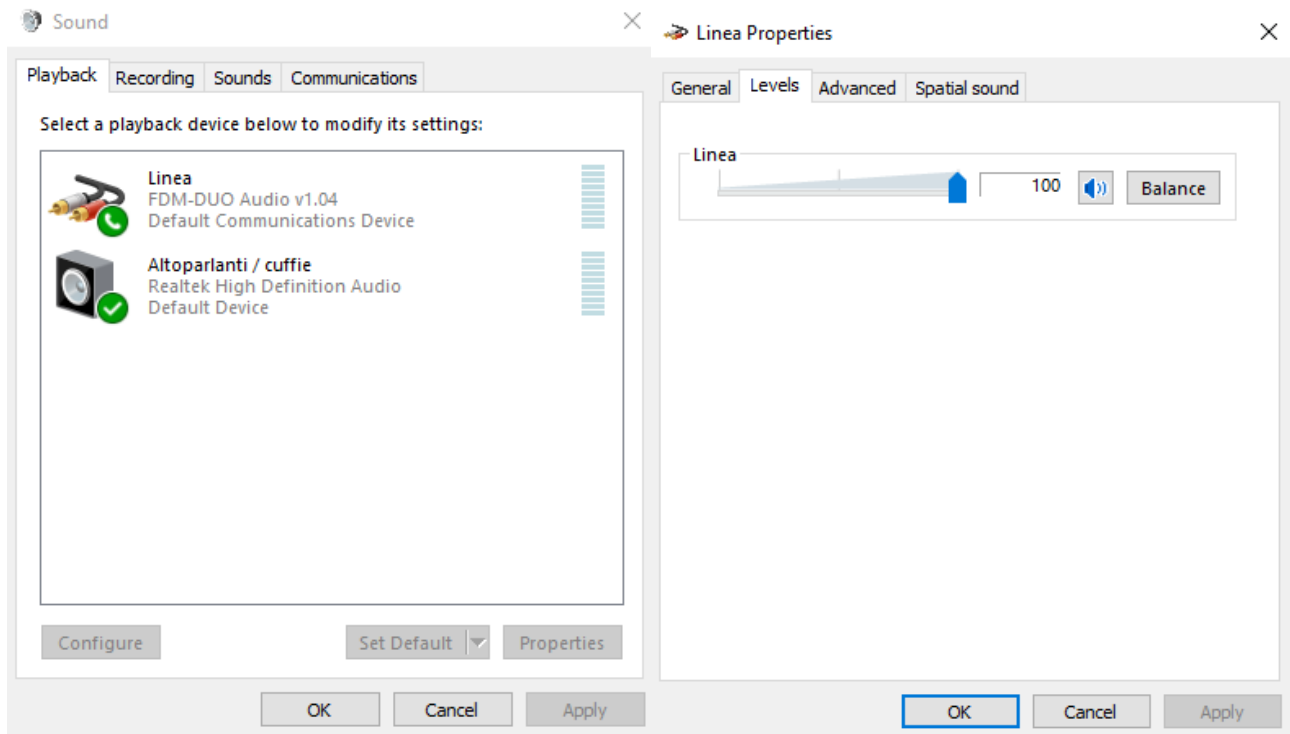
USB CAT drivers has to be installed on the computer you are using, if you have more than one you can disconnect and reconnect the USB CAT cable and find the one for the CAT command:



Check if the computer detects the input and output audio lines of the FDM-DUO:



Check also the play and record's volume:

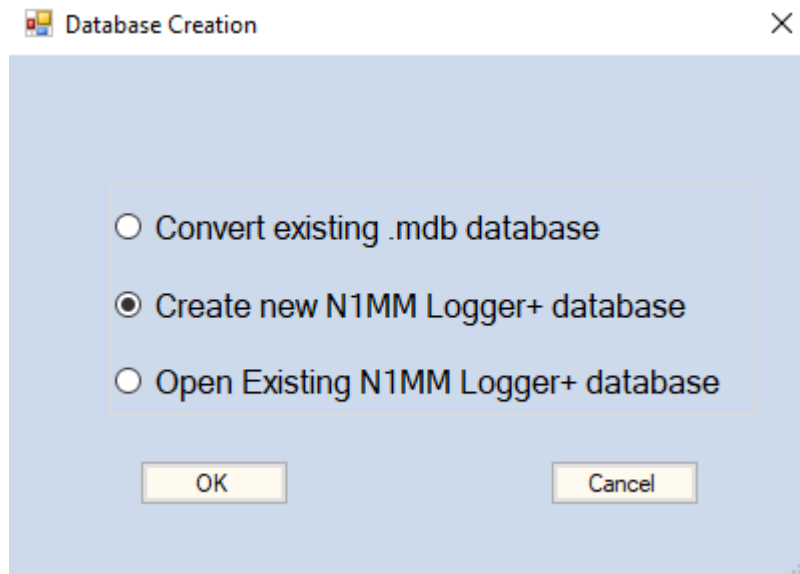


1 N1MM first look

At the end of the installation, after a computer's restart, at the start there will be a short procedure in order to set a contest.

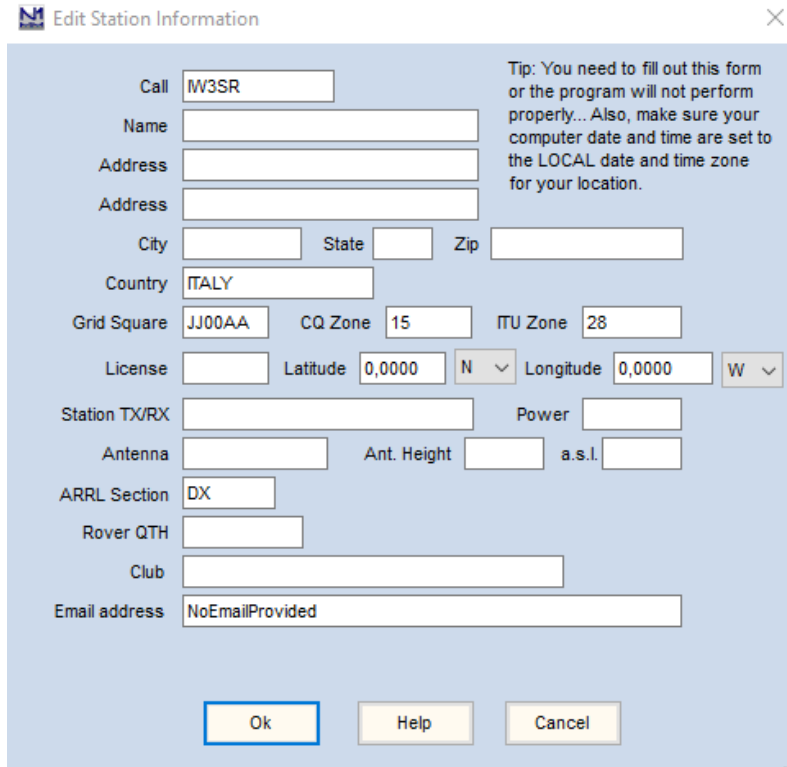
2 N1MM settings

When you start the software for the first time some warnings will appear, click "OK" on everyone. After those warnings it has to be set a database and some more options.



Before it's possible to set the FDM-DUO configurations it has to be created a new N1MM Logger+ database. Click "OK", chose a name for it and save it in a folder (better if it's the installation one).

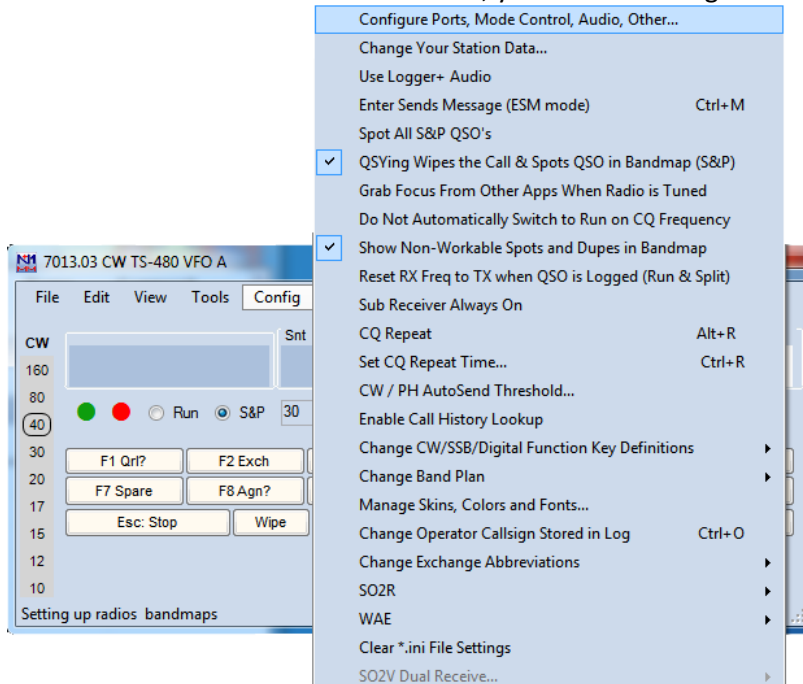
After the creation of a database it has to be set the information of themselves and the antenna:



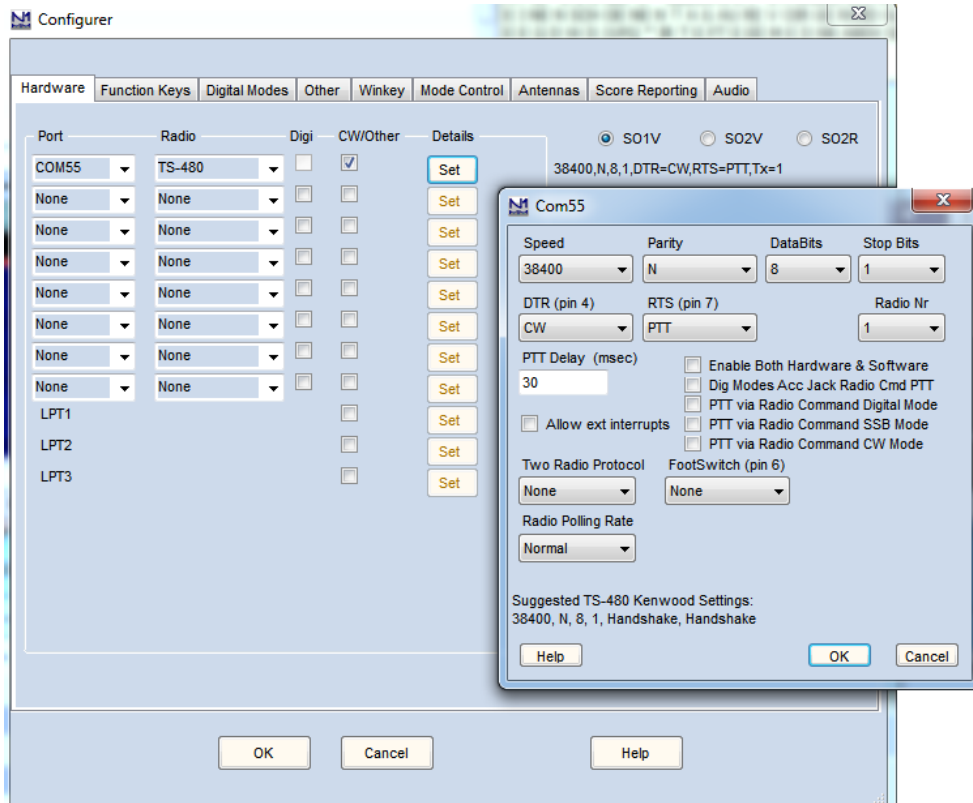
Note: If the user doesn't have an American "Call" or it doesn't live there, in the "ARRL Section" can't be blank and it has to be inserted "DX".

Please check this link if you don't remember your "CQ Zone" or your "ITU Zone": <http://www.mapability.com/ei8ic/maps/maps.php>

Now the FDM-DUO has to be set and in order to do that, you need to configure the relative settings:

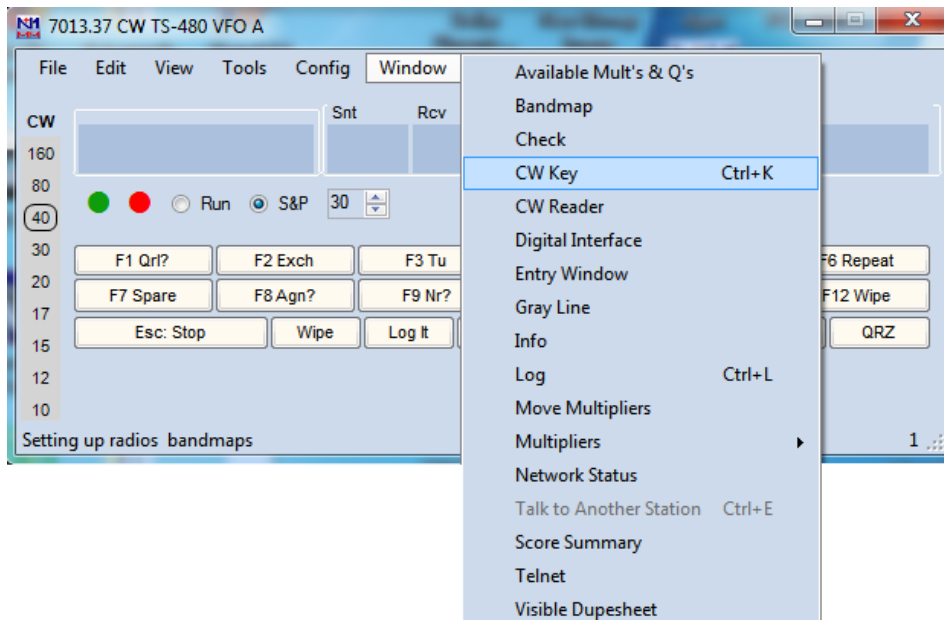


And then set as follows the configuration for the FDM-DUO:



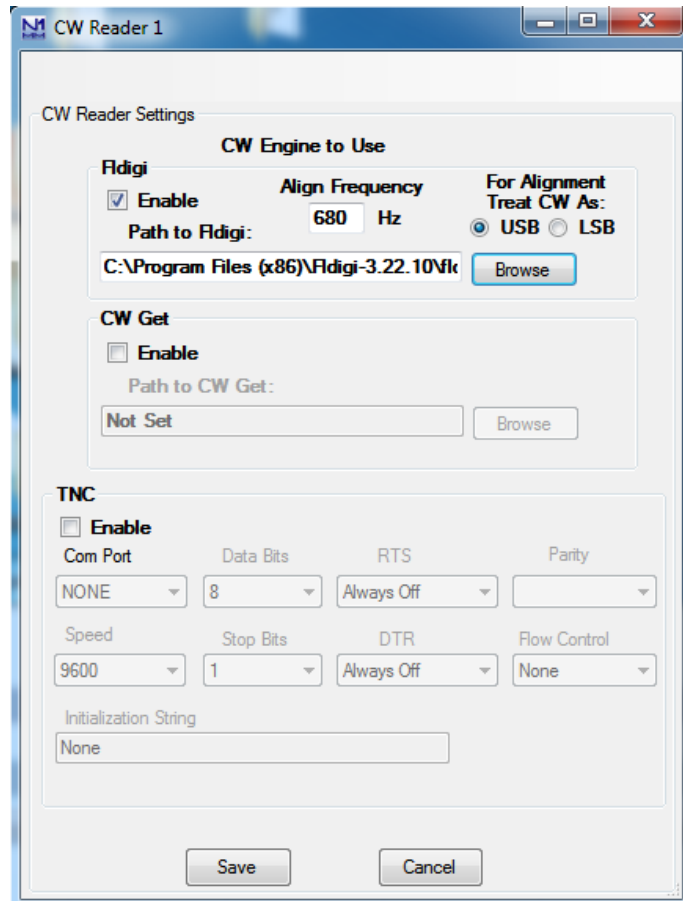
Note: In the FDM-DUO you have to modify the menu 54 PTT into “IN+RTS”, the menu 37 CW IN into “K+DTR” and the modulation into CW.

Now the configuration is almost complete and it’s possible to receive. In case the user wants to send messages it has to:



And then a window will appear, in that one the user can type whatever he wants and transmit it. The transmission is simultaneous.

The reading process is a bit more complicated, the firsts passages are the same but instead of clicking “CW Key” it has to be pressed “CW Reader”. A window will shows up and it has to be configured as follow:



The “Align Frequency” is the Pitch of the FDM-DUO and the “Path to Fldigi” is the directory where is installed. Set the next windows as you prefer and after the Waterfall graph will appear:

