



# ELAD Application Notes AN-005 rev 1.0

## VSPE (0.938.4.486) + third part programs

### Index

Introduction.....	2
1 VSPE.....	2
1.1 Software Installation .....	2
1.1.1 VSPE First Look .....	2
1.1.2 VSPE Settings .....	3

## Introduction

The purpose of this Application Note is to describe how to share physical COM port of the DUO with more than one programs using VSPE (Virtual Serial Port Emulator).

In this case COM8 will be the physical one and COM11 the virtual one that will be used by the programs.

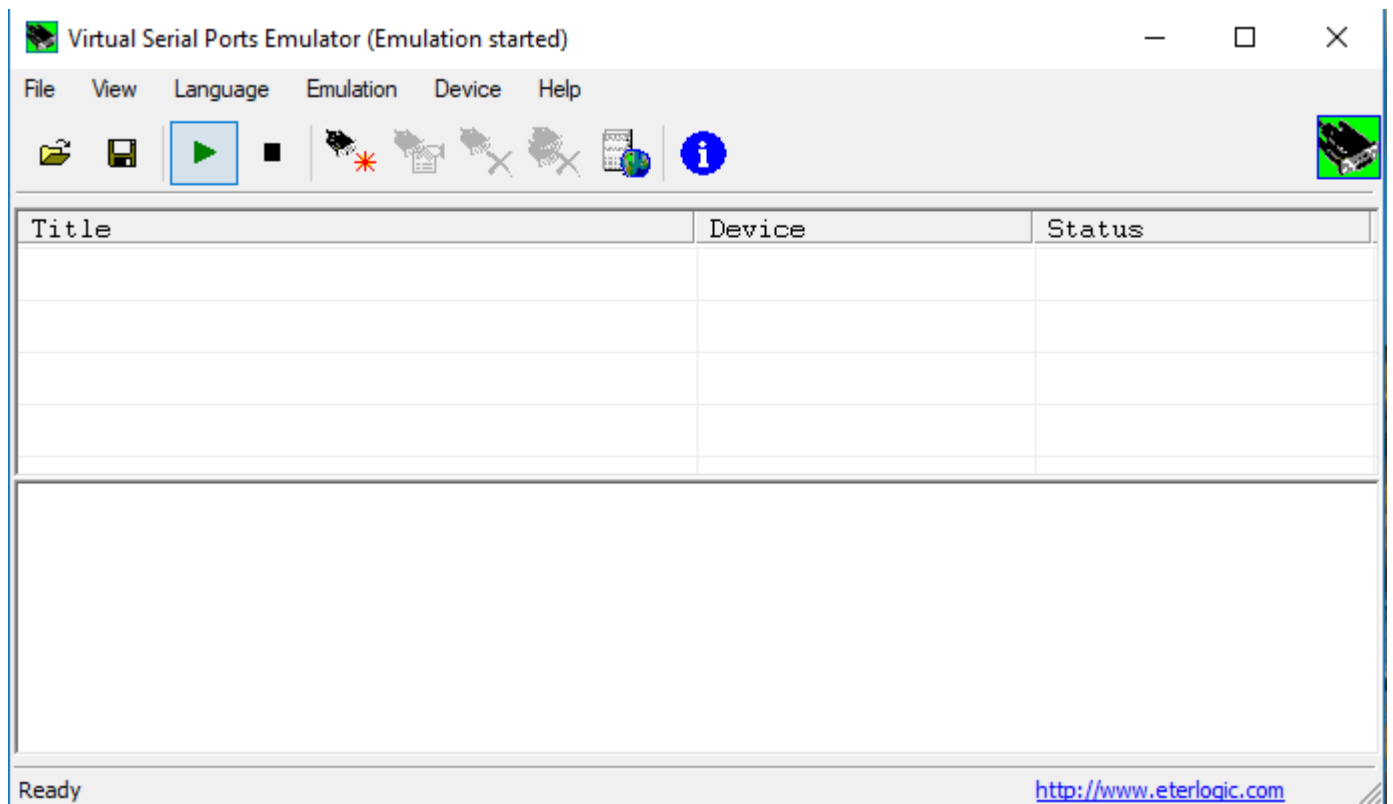
In this Application Note we use Hercules program as a terminal program to have access to the ports. You can download it from here: [https://www.hw-group.com/products/hercules/index\\_en.html](https://www.hw-group.com/products/hercules/index_en.html).

## 1 VSPE

### 1.1 Software Installation

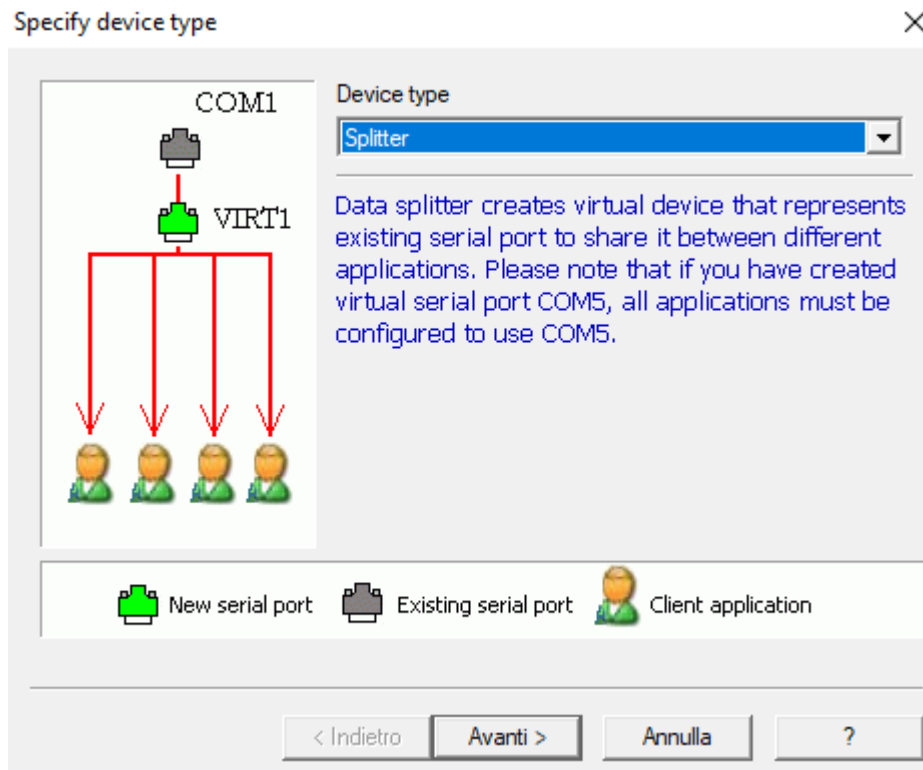
#### 1.1.1 VSPE First Look

When the installation of the software is finished the software will show this window:

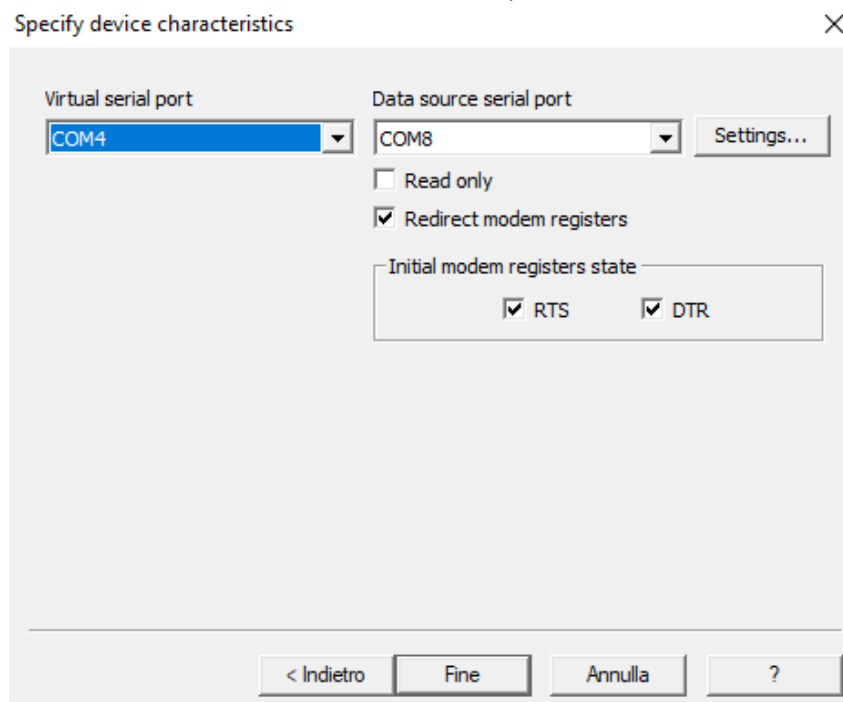


### 1.1.2 VSPE Settings

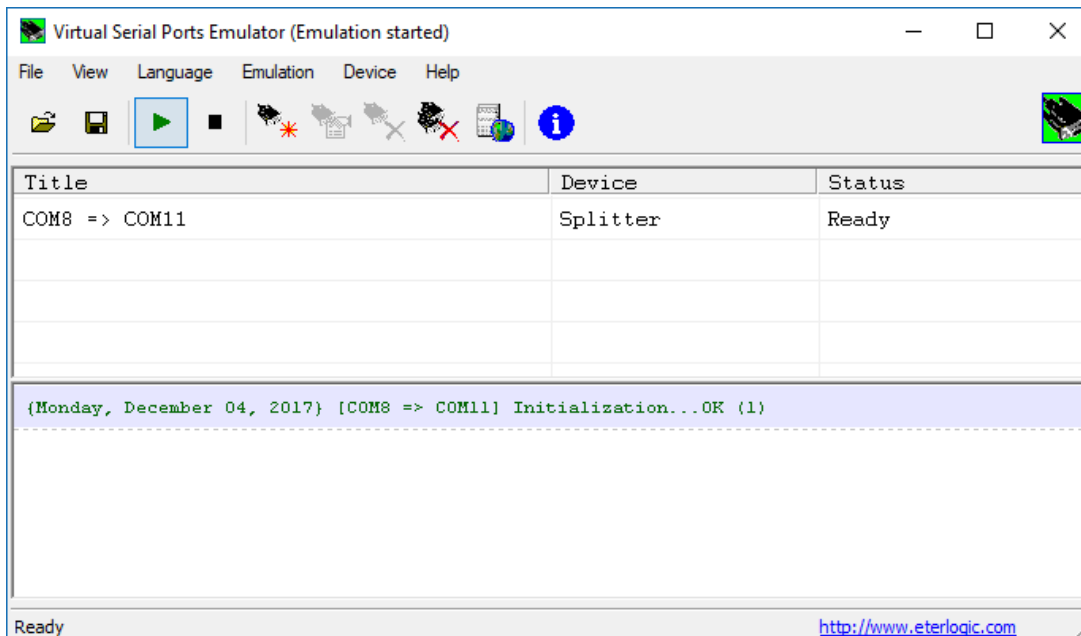
The first thing to do is to create a virtual splitter:



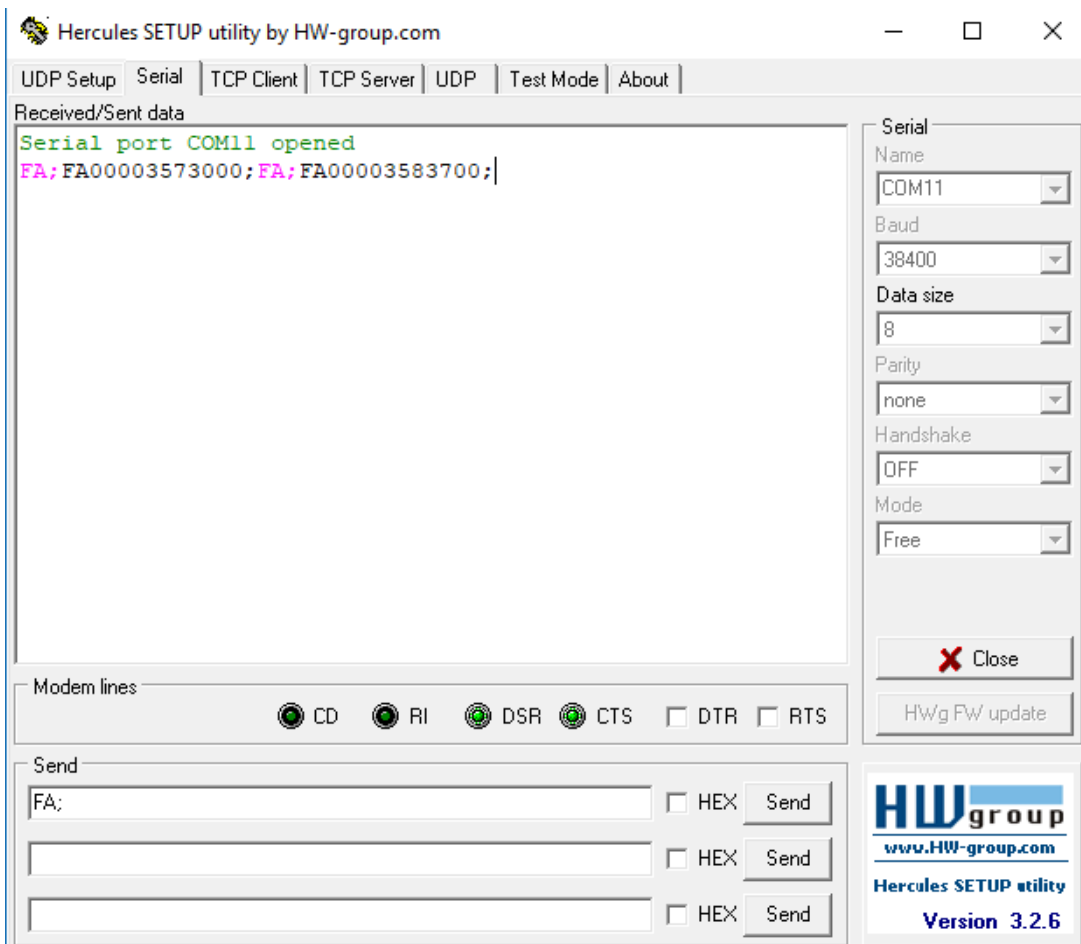
Click on “Next” or “Avanti” and select for the “Virtual serial port” the number you prefer and for the “Data source serial port” select the one that is connected to the CAT port of the FDM-DUO.



Then click “Finish” or “Fine” and in the main windows you should see the splitter that is created:

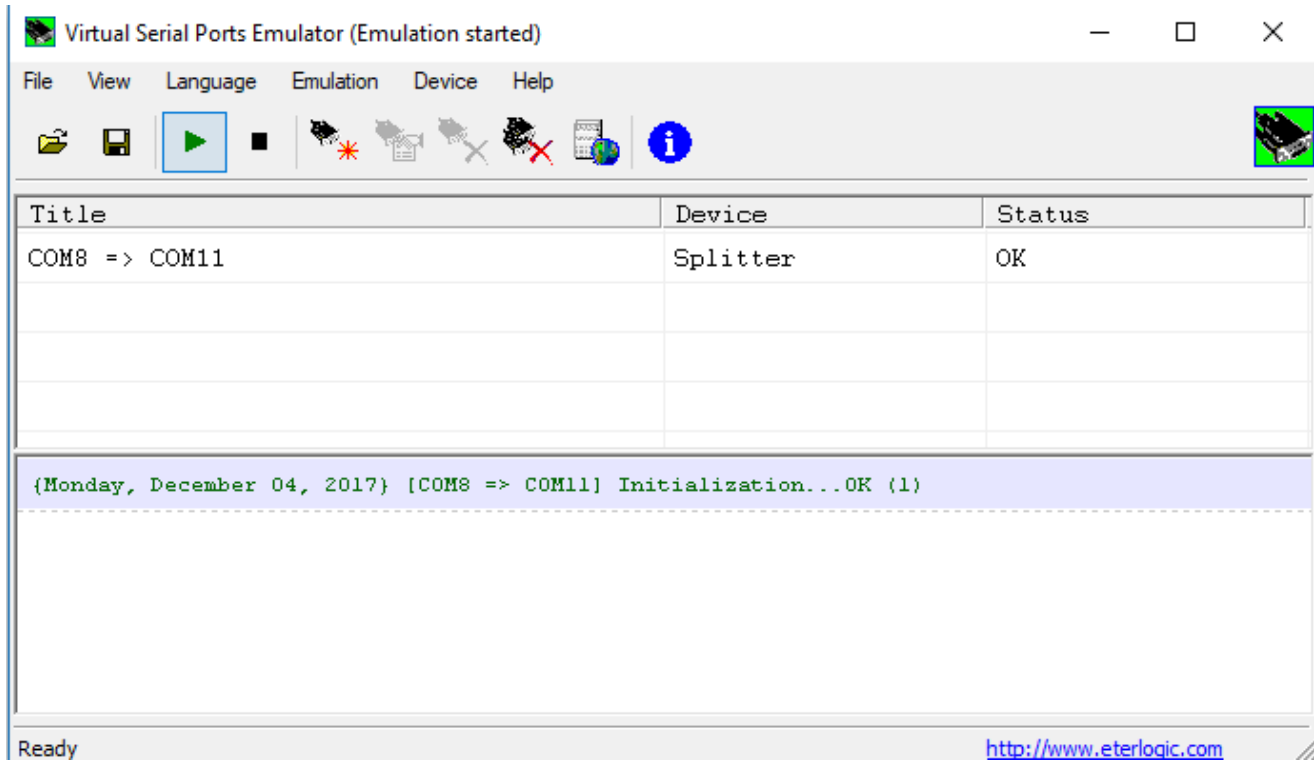


To start the emulation click on the green triangle and the “Status” should you should read “Ready”. Now it’s set up and if you want to be sure that the virtual port works you can use “Hercules”.

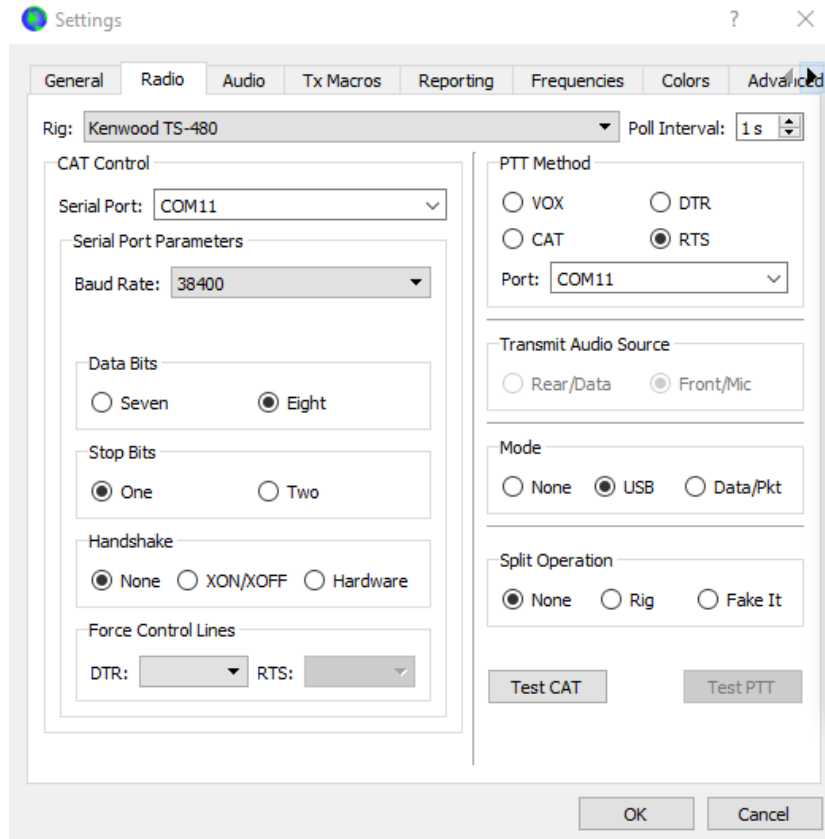


Note: the string "FA;" is a command that returns the actual frequency of the device.

After this steps, it has to be set up in the software you use the virtual serial port instead of the physical one and you can access the resource from multiple programs.



For example we can use WSJT-X and select the virtual port as the source port:



Note: in the audio tab it has to be set for the input and the output the FDM-DUO lines

