



# ELAD FDM-DUO Quick Start Guide: Stand Alone

Refer to Elad repository website <http://sdr.eladit.com/> for latest user manuals, software and firmware updates.



## Short Pressure/Long Pressure

Each key have a different function if it is pressed for a short or a long time. Modify this time in the system menu 71 "Hold Time".

## Select a band

Keep pressed the **F1** key until the desired frequency/band appears on the LCD display, then release the key and the current VFO is set to the frequency and mode saved in the memory channel 180 - 199.

## Change Mode

Push the **MODE** key to change the operating mode.

## Antenna Tuning

Apply a long pressure on **F3** to switch to the Antenna Tuning Mode. In this mode a tone at the transmission frequency is generated. Use **E2** to modify the transmission power. Apply a long pressure on **F3** to quit the antenna tuning mode.

## Select the TX source (MIC / TX USB Data)

Push **MENU**. Turn **E2** to select the menu 32 "TX IN", push **E2** to display the parameter setting, then turn **E2** to select the microphone or the TX USB data. Push again **E2** to save the setting and exit.

## Tune a frequency

Use the **main knob** to set the current VFO frequency. Apply a long pressure on the main encoder to enter the "Digit by Digit Tuning Mode".

## Digit by digit tuning mode

In this mode use the **main knob** to modify the selected digit and **E1** or **E2** to change witch digit you want to modify. Apply a short pressure on **main knob** to return in the standard tuning mode.

## Change the tuning step

Push the **main knob** to enter the step selection menu, turn the **main knob** to select the tuning step preset. Push the **main knob** to save.

## Toggle between two tuning step

Push the **S** key to use the frequency step selected in the menu 7 "Quick Step", press again the **S** key to use the previous frequency step.

## Modify the system settings

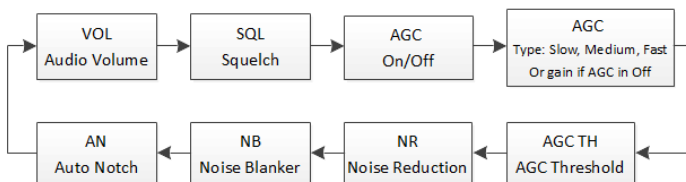
Push the **MENU** key. Turn **E2** to select the parameter, push **E2** to display the parameter value, then turn **E2** to modify the parameter value. Push again **E2** to save the setting and the **MENU** key to exit.

## Use of E1 and E2 Knobs

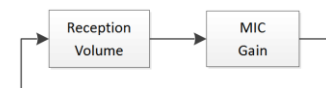
**Turn:** modify the selected parameter  
**Short press:** change parameter selection

## E1 knob

Rx settings

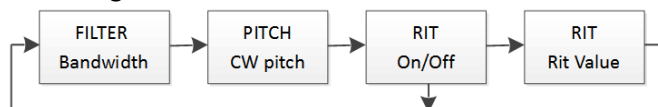


Tx AM/SSB/FM settings

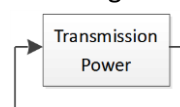


## E2 knob

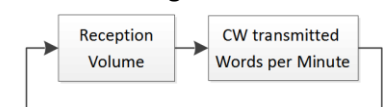
Rx settings



Tx settings



Tx CW settings



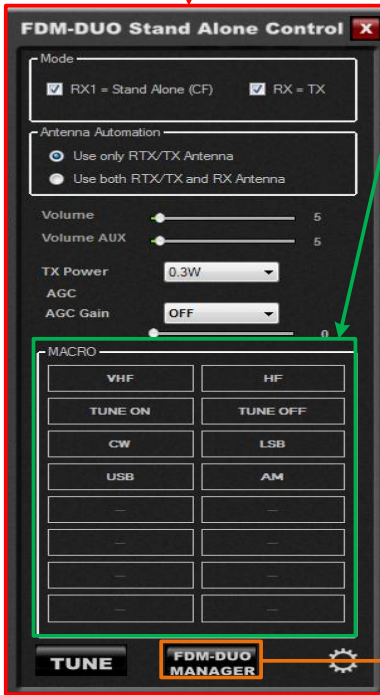
# ELAD FDM-DUO Quick Start Guide: Pc Mode

Refer to Elad repository website <http://sdr.eladit.com/> for latest user manuals, software and firmware updates.

## Features Available with ELAD FDM-SW2 Software (Ver. 1.88 or Greater)

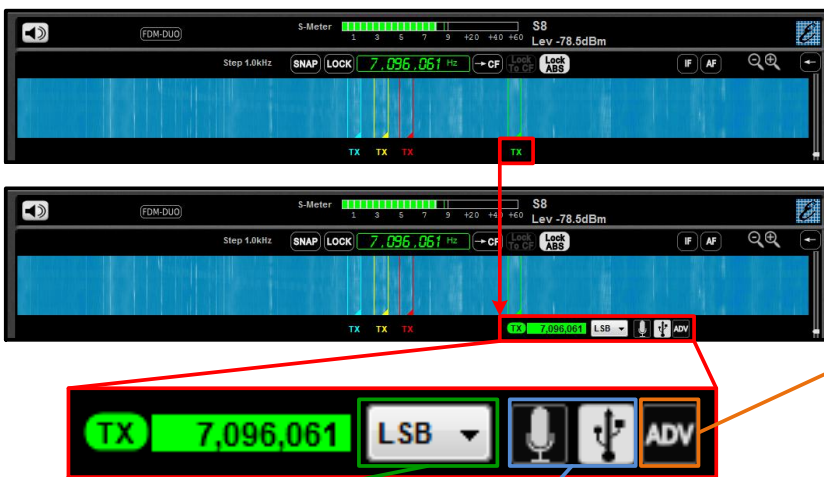
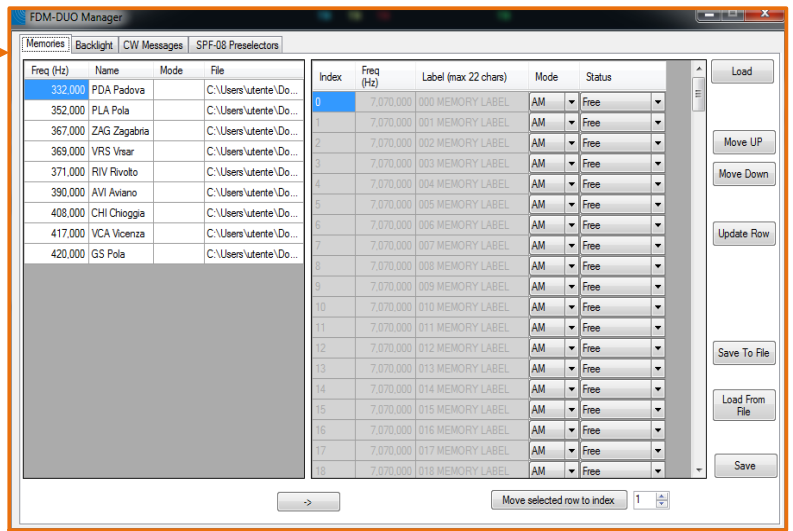


"FDM-DUO Stand Alone Control" allows direct control of the parameters of the FDM-DUO device from the PC (e.g. volume levels, Tx power, etc.) to avoid having to act on the knobs and buttons on the front panel.

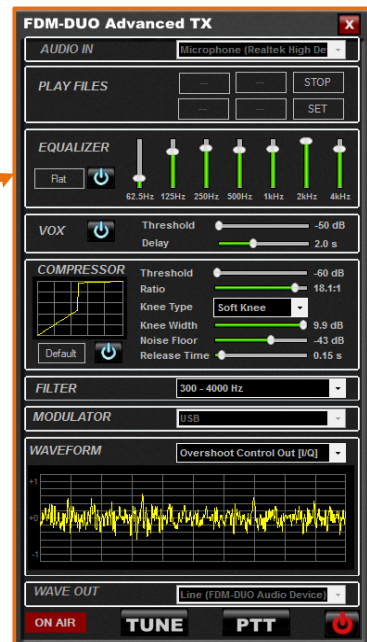


### User-Defined Macros

"FDM-DUO Manager" allows management of the data (Memories, Backlight Colors, CW Messages and SPF-08 Pre-Selector settings) stored in the FDM-DUO internal memory.



"FDM-DUO Advanced TX" allows advanced DSP processing (e.g. Audio Equalizer, VOX, Audio Compressor, etc.) of data to be sent via sound-card to the FDM-DUO transmitter.



Tx Mode Selection:  
CW, USB, LSB, AM, FM

Input Mode Selection:  
- Key or Paddle for CW  
- Mic or Sound-Card for USB, LSB, AM, FM

NB: user manuals and softwares are provided on an USB flash drive supplied together with cables assembly bag. Use this USB flash drive also to proceed with firmware upgrades.